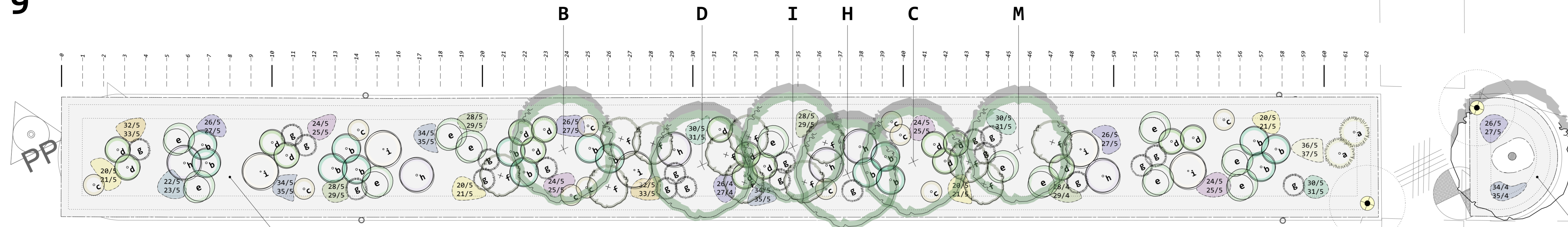


BERM 9

1:100

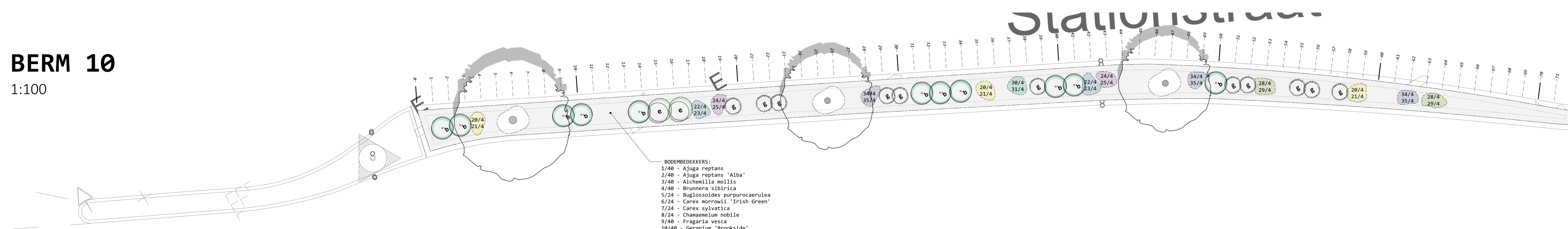


- BODEMBEDEKKERS:**
- 1/114 - Ajuga reptans
 - 2/114 - Ajuga reptans 'Alba'
 - 3/114 - Alchemilla mollis
 - 4/114 - Brunnera sibirica
 - 5/69 - Buglossoides purpurocaerulea
 - 6/69 - Carex morrowii 'Irish Green'
 - 7/69 - Carex sylvatica
 - 8/69 - Chamaemelum nobile
 - 9/114 - Fragaria vesca
 - 10/114 - Geranium 'Brookside'
 - 11/114 - Geranium 'St. Oia'
 - 12/183 - Glechoma hederacea
 - 13/114 - Liriope spicata
 - 14/183 - Pachysandra terminalis 'Green Carpet'
 - 15/286 - Symphytum grandiflorum
 - 16/168 - Teucrium chamaedrys
 - 17/92 - Thymus praecox 'Albiflorus'
 - 18/168 - Veronica austriaca 'Knallblau'
 - 19/114 - Vinca minor 'Album'

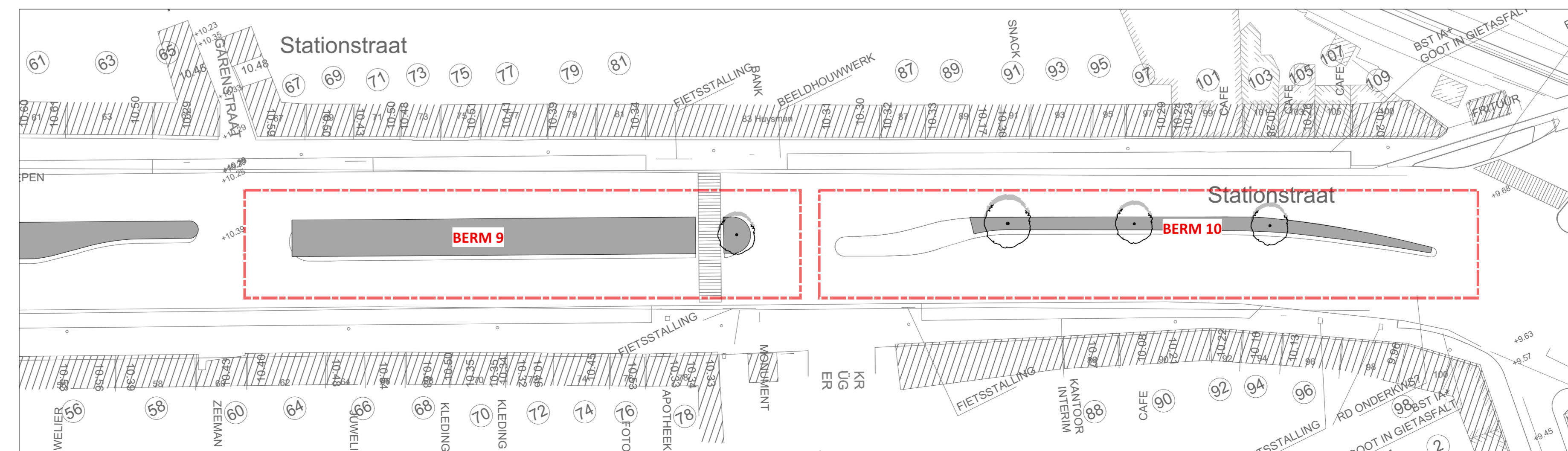
- BODEMBEDEKKERS:**
- 1/5 - Ajuga reptans
 - 2/5 - Ajuga reptans 'Alba'
 - 3/5 - Alchemilla mollis
 - 4/5 - Brunnera sibirica
 - 5/3 - Buglossoides purpurocaerulea
 - 6/3 - Carex morrowii 'Irish Green'
 - 7/3 - Carex sylvatica
 - 8/3 - Chamaemelum nobile
 - 9/5 - Fragaria vesca
 - 10/5 - Geranium 'Brookside'
 - 11/5 - Geranium 'St. Oia'
 - 12/8 - Glechoma hederacea
 - 13/5 - Liriope spicata
 - 14/8 - Pachysandra terminalis 'Green Carpet'
 - 15/9 - Symphytum grandiflorum
 - 16/7 - Teucrium chamaedrys
 - 17/4 - Thymus praecox 'Albiflorus'
 - 18/7 - Veronica austriaca 'Knallblau'
 - 19/5 - Vinca minor 'Album'

BERM 10

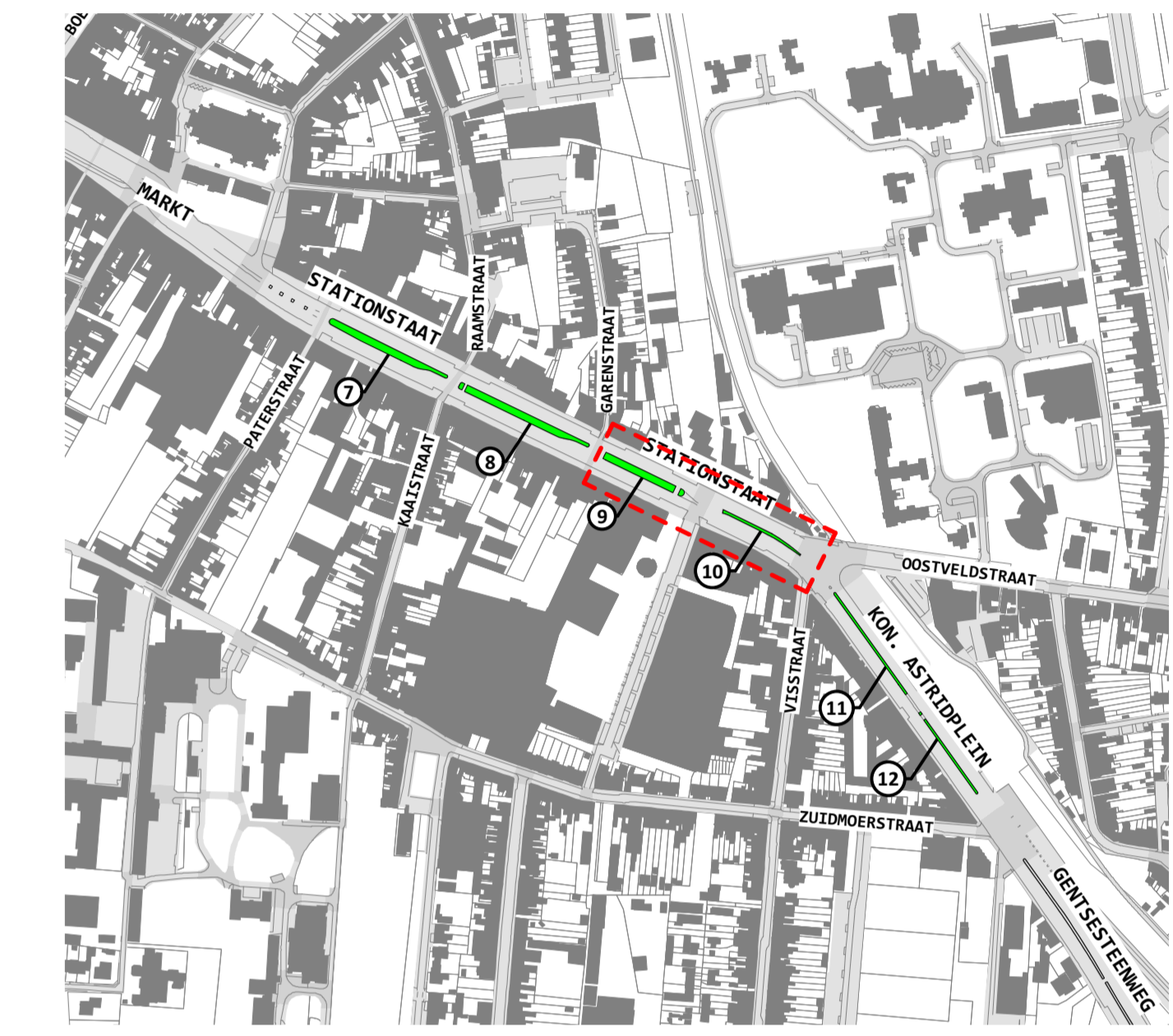
1:100



- BODEMBEDEKKERS:**
- 1/48 - Ajuga reptans
 - 2/48 - Ajuga reptans 'Alba'
 - 3/48 - Alchemilla mollis
 - 4/48 - Brunnera sibirica
 - 5/24 - Buglossoides purpurocaerulea
 - 6/24 - Carex morrowii 'Irish Green'
 - 7/24 - Carex sylvatica
 - 8/24 - Chamaemelum nobile
 - 9/48 - Fragaria vesca
 - 10/48 - Geranium 'Brookside'
 - 11/48 - Geranium 'St. Oia'
 - 12/64 - Glechoma hederacea
 - 13/48 - Liriope spicata
 - 14/64 - Pachysandra terminalis 'Green Carpet'
 - 15/72 - Symphytum grandiflorum
 - 16/56 - Teucrium chamaedrys
 - 17/32 - Thymus praecox 'Albiflorus'
 - 18/56 - Veronica austriaca 'Knallblau'
 - 19/48 - Vinca minor 'Album'



BOMEN:	HEESTERS:	VASTE PLANTEN: bodembedekkers	VASTE PLANTEN: accentsoorten
1 - Betula pendula	1 - Chamaenerion pratense	1 - Ajuga reptans	1 - Echinops 'White Star'
2 - Betula nana	2 - Chamaenerion pratense 'Alba'	2 - Ajuga reptans 'Alba'	2 - Echinops 'White Star'
3 - Alnus 'Spaethi Spaethi'	3 - Cornus sericea 'Floratam'	3 - Alchemilla mollis	3 - Echinops 'White Star'
4 - Quercus robur	4 - Cornus sericea 'Floratam'	4 - Brunnera sibirica	4 - Echinops 'White Star'
5 - Quercus robur	5 - Cornus sericea 'Floratam'	5 - Brunnera sibirica	5 - Echinops 'White Star'
6 - Quercus petraea	6 - Cornus sericea 'Floratam'	6 - Buglossoides purpurocaerulea	6 - Echinops 'White Star'
7 - Tilia cordata 'Van Pelt'	7 - Cornus sericea 'Floratam'	7 - Buglossoides purpurocaerulea	7 - Echinops 'White Star'
8 - Acer campestre 'Robusta Legend'	8 - Cornus sericea 'Floratam'	8 - Buglossoides purpurocaerulea	8 - Echinops 'White Star'
9 - Celtis occidentalis	9 - Cornus sericea 'Floratam'	9 - Buglossoides purpurocaerulea	9 - Echinops 'White Star'
10 - Carpinus betulus 'VDB Obelisk'	10 - Cornus sericea 'Floratam'	10 - Buglossoides purpurocaerulea	10 - Echinops 'White Star'
11 - Malus domestica 'Laxa Lady'	11 - Cornus sericea 'Floratam'	11 - Buglossoides purpurocaerulea	11 - Echinops 'White Star'
12 - Syringa vulgaris 'Miss Lindley'	12 - Cornus sericea 'Floratam'	12 - Buglossoides purpurocaerulea	12 - Echinops 'White Star'
13 - Corylus avellana	13 - Cornus sericea 'Floratam'	13 - Buglossoides purpurocaerulea	13 - Echinops 'White Star'
14 - Salix 'Dorland'	14 - Cornus sericea 'Floratam'	14 - Buglossoides purpurocaerulea	14 - Echinops 'White Star'
15 - Salix 'Dorland'	15 - Cornus sericea 'Floratam'	15 - Buglossoides purpurocaerulea	15 - Echinops 'White Star'



UITVOERINGSDOSSIER: STATIONSTRAAT - BERM 9 + 10		NO. DOG.
		06
211-EKLO-N9	1:100	
INDEX	DATUM	OPMERKINGEN
1	1	1

GR/S landschapsarchitectuur
 Antoon Sandersestraat 3 | 3000 Gave | tel: 0321 9 233 92 22 | e: info@grands.be | www.grands.be | Thomas Janssens

Stad EEKLO
 Industrielaan 2, 9900 Eeklo
 Contactpersoon: Kristof De Spigelaere | Diensthoofd Grondgebiedszaken
 Tel. +32 9 238 28 50 | GSM +32 486 02 24 90

Beplantingswerken middenberm N9 | EEKLO

17 september 2019